



**Matthew G. Bevin**  
Governor

**COMMONWEALTH OF KENTUCKY**  
**TRANSPORTATION CABINET**  
Frankfort, Kentucky 40622  
[www.transportation.ky.gov/](http://www.transportation.ky.gov/)

**Greg Thomas**  
Secretary

April 25, 2018

CALL NO. 103  
CONTRACT ID NO. 181210  
ADDENDUM # 1

Subject: SCOTT COUNTY, STP BRZ 0703 (347)  
Letting April 27, 2018

- (1) Revised - Proposal Bid Items - Pages 121-122 of 122
- (2) Revised - Plan Sheets - R2B and R3

Proposal revisions are available at <http://transportation.ky.gov/Construction-Procurement/>.

If you have any questions, please contact us at 502-564-3500.

Sincerely,

A handwritten signature in cursive script that reads "Rachel Mills".

Rachel Mills, P.E.  
Director  
Division of Construction Procurement

RM:mr  
Enclosures



An Equal Opportunity Employer M/F/D

**PROPOSAL BID ITEMS**

Report Date 4/25/18

**Section: 0001 - PAVING**

LINE	BID CODE	ALT	DESCRIPTION	QUANTITY	UNIT	UNIT PRIC	FP	AMOUNT
0010	00003		CRUSHED STONE BASE	1,124.00	TON		\$	
0020	00078		CRUSHED AGGREGATE SIZE NO 2	2.00	TON		\$	
0030	00100		ASPHALT SEAL AGGREGATE	9.00	TON		\$	
0040	00212		CL2 ASPH BASE 1.00D PG64-22	348.00	TON		\$	
0050	00291		EMULSIFIED ASPHALT RS-2	1.00	TON		\$	
0060	00301		CL2 ASPH SURF 0.38D PG64-22	137.00	TON		\$	
0070	00356		ASPHALT MATERIAL FOR TACK	2.45	TON		\$	

**Section: 0002 - ROADWAY**

LINE	BID CODE	ALT	DESCRIPTION	QUANTITY	UNIT	UNIT PRIC	FP	AMOUNT
0080	01000		PERFORATED PIPE-4 IN	81.00	LF		\$	
0090	01010		NON-PERFORATED PIPE-4 IN	16.00	LF		\$	
0100	01020		PERF PIPE HEADWALL TY 1-4 IN	1.00	EACH		\$	
0110	01028		PERF PIPE HEADWALL TY 3-4 IN	1.00	EACH		\$	
0120	01891		ISLAND HEADER CURB TYPE 2	100.00	LF		\$	
0130	02014		BARRICADE-TYPE III	4.00	EACH		\$	
0135	02091		REMOVE PAVEMENT (ADDED: 4-25-18)	161.00	SQYD		\$	
0140	02159		TEMP DITCH	260.00	LF		\$	
0150	02200		ROADWAY EXCAVATION	4,589.00	CUYD		\$	
0160	02242		WATER (FOR DUST CONTROL)	6.50	MGAL		\$	
0170	02351		GUARDRAIL-STEEL W BEAM-S FACE	766.00	LF		\$	
0180	02360		GUARDRAIL TERMINAL SECTION NO 1	1.00	EACH		\$	
0190	02363		GUARDRAIL CONNECTOR TO BRIDGE END TY A	4.00	EACH		\$	
0200	02371		GUARDRAIL END TREATMENT TYPE 7	1.00	EACH		\$	
0210	02381		REMOVE GUARDRAIL	760.00	LF		\$	
0220	02429		RIGHT-OF-WAY MONUMENT TYPE 1	7.00	EACH		\$	
0230	02432		WITNESS POST	7.00	EACH		\$	
0240	02483		CHANNEL LINING CLASS II	167.00	TON		\$	
0250	02545		CLEARING AND GRUBBING (APPROXIMATELY 1.94 ACRES)	1.00	LS		\$	
0260	02562		TEMPORARY SIGNS	432.00	SQFT		\$	
0270	02585		EDGE KEY	31.00	LF		\$	
0275	02599		FABRIC-GEOTEXTILE TYPE IV (ADDED: 4-25-18)	1,600.00	SQYD		\$	
0280	02650		MAINTAIN & CONTROL TRAFFIC	1.00	LS		\$	
0290	02701		TEMP SILT FENCE	878.00	LF		\$	
0300	02703		SILT TRAP TYPE A	2.00	EACH		\$	
0310	02706		CLEAN SILT TRAP TYPE A	2.00	EACH		\$	
0320	02726		STAKING	1.00	LS		\$	
0330	02731		REMOVE STRUCTURE	1.00	LS		\$	
0340	05952		TEMP MULCH	4,252.00	SQYD		\$	
0350	05953		TEMP SEEDING AND PROTECTION	3,189.00	SQYD		\$	
0360	05963		INITIAL FERTILIZER	.20	TON		\$	

**PROPOSAL BID ITEMS**

Report Date 4/25/18

LINE	BID CODE	ALT	DESCRIPTION	QUANTITY	UNIT	UNIT PRIC	FP	AMOUNT
0370	05964		20-10-10 FERTILIZER	.33	TON		\$	
0380	05985		SEEDING AND PROTECTION	6,377.00	SQYD		\$	
0390	05989		SPECIAL SEEDING CROWN VETCH	136.00	SQYD		\$	
0400	05992		AGRICULTURAL LIMESTONE	5.55	TON		\$	
0410	06406		SBM ALUM SHEET SIGNS .080 IN	8.50	SQFT		\$	
0420	06407		SBM ALUM SHEET SIGNS .125 IN	16.00	SQFT		\$	
0430	06410		STEEL POST TYPE 1	50.00	LF		\$	
0440	06510		PAVE STRIPING-TEMP PAINT-4 IN	1,400.00	LF		\$	
0450	06514		PAVE STRIPING-PERM PAINT-4 IN	2,600.00	LF		\$	
0460	24631EC		BARCODE SIGN INVENTORY	4.00	EACH		\$	

**Section: 0003 - BRIDGE - LECOMPTES CREEK - DWG. 27282**

LINE	BID CODE	ALT	DESCRIPTION	QUANTITY	UNIT	UNIT PRIC	FP	AMOUNT
0470	02998		MASONRY COATING	417.00	SQYD		\$	
0480	03299		ARMORED EDGE FOR CONCRETE	45.60	LF		\$	
0490	08001		STRUCTURE EXCAVATION-COMMON	228.00	CUYD		\$	
0500	08002		STRUCTURE EXCAV-SOLID ROCK	543.00	CUYD		\$	
0510	08019		CYCLOPEAN STONE RIP RAP	609.00	TON		\$	
0520	08100		CONCRETE-CLASS A	433.60	CUYD		\$	
0530	08104		CONCRETE-CLASS AA	60.30	CUYD		\$	
0540	08150		STEEL REINFORCEMENT	48,527.00	LB		\$	
0550	08151		STEEL REINFORCEMENT-EPOXY COATED	14,797.00	LB		\$	
0560	08633		PRECAST PC I BEAM TYPE 3	210.30	LF		\$	
0570	21532ED		RAIL SYSTEM TYPE III	142.00	LF		\$	

**Section: 0004 - DEMOBILIZATION &/OR MOBILIZATION**

LINE	BID CODE	ALT	DESCRIPTION	QUANTITY	UNIT	UNIT PRIC	FP	AMOUNT
0580	02569		DEMOBILIZATION	1.00	LS		\$	

**GENERAL SUMMARY**

ITEM	DESCRIPTION	UNIT	MAIN LINE	TOTAL PROJECT
2545	CLEARING AND GRUBBING	LUMP SUM	1	1
2200	ROADWAY EXCAVATION	CU YD	4,589	4,589
5985	SEEDING AND PROTECTION	SO YD	6,377	6,377
5953	TEMP SEEDING AND PROTECTION	SO YD	3,189	3,189
2429	RIGHT-OF-WAY MONUMENT TYPE 1	EACH	7	7
2432	WITNESS POST	EACH	7	7
5952	TEMP MULCH	SO YD	4,252	4,252
5963	INITIAL FERTILIZER	TON	0.20	0.20
5964	20-10-10 FERTILIZER	TON	0.33	0.33
2701	TEMP SILT FENCE	LF	878	878
2585	EDGE KEY	LF	31	31
2703	SILT TRAP TYPE A	EACH	2	2
2706	CLEAN SILT TRAP TYPE A	EACH	2	2
2650	MAINTAIN AND CONTROL TRAFFIC	LUMP SUM	1	1
2726	STAKING	LUMP SUM	1	1
2242	WATER	M GAL	6.5	6.5
2731	REMOVE STRUCTURE	LUMP SUM	1	1
2569	DEMobilIZATION	LUMP SUM	1	1
2483	CHANNEL LINING CLASS II	TONS	167	167
02381	REMOVE GUARDRAIL	LF	760	760
02351	GUARDRAIL-STEEL W BEAM-S FACE	LF	766	766
02360	GUARDRAIL TERMINAL SECTION NO 1	EACH	1	1
02371	GUARDRAIL END TREATMENT TYPE 7	EACH	1	1
2363	GUARDRAIL CONNECTOR TO BRIDGE END TY A	EACH	4	4
2562	TEMPORARY SIGNS	SO FT	432	432
6514	PAVE STRIPING-PERM PAINT-4 IN	LF	2,600	2,600
2159	TEMP DITCH	LF	260	260
2014	BARRICADE-TYPE III	EACH	4	4
5989	SPECIAL SEEDING CROWN VETCH	SO YD	136	136
6510	PAVE STRIPING-TEMP PAINT-4 IN	LF	1,400	1,400
5992	AGRICULTURAL LIMESTONE	TONS	5.55	5.55
6406	SBM ALUM SHEET SIGNS .080 IN	SO FT	8.50	8.50
6407	SBM ALUM SHEET SIGNS .125 IN	SO FT	16	16
6410	STEEL POST TYPE 1	LF	50	50
1891	ISLAND HEADER CURB TYPE 2	LF	100	100
1020	PERF PIPE HEADWALL TY 1-4 IN	EACH	1	1
1028	PERF PIPE HEADWALL TY 3-4 IN	EACH	1	1
1000	PERFORATED PIPE-4 IN	LF	81	81
1010	NON-PERFORATED PIPE-4 IN	LF	16	16
24631 EC	BARCODE SIGN INVENTORY	EACH	4	4
2599	FABRIC-GEOTEXTILE TYPE IV	SOYD	1600	1600
2091	REMOVE PAVEMENT	SOYD		161

**PIPE DRAINAGE SUMMARY**

SHEET NO.	SKREW										REMARKS
	ITEM CODE										
	UNIT TO BID										
	TOTAL PROJECT										

**PAVING SUMMARY**

ITEM CODE	ITEM	UNIT	MAINLINE	ENTRANCE	TOTAL PROJECT
00301	CL2 ASPH SURF 0.380 PG64-22	TON	120	17	137
00212	CL2 ASPH BASE 1.000 PG64-22	TON	321	27	348
00003	CRUSHED STONE BASE ①	TON	1,066	58	1,124
00100	ASPHALT SEAL AGGREGATE	TON	9		9
00291	EMULSIFIED ASPHALT RS-2	TON	1		1
00356	ASPHALT MATERIAL FOR TACK	TON	2.45		2.45
00078	CRUSHED AGGREGATE SIZE NO 2	TON	2		2

**PAVING AREAS**

ITEM	MAIN LINE	ENTRANCE	TOTAL PROJECT
1.25" CL2 ASPH SURF 0.380 PG64-22		248	248
1.50" CL2 ASPH SURF 0.380 PG64-22	1,456		1,456
2.00" CL2 ASPH BASE 1.000 PG64-22		249	249
4.00" CL2 ASPH BASE 1.000 PG64-22	1,459		1,459
6.00" CRUSHED STONE BASE	1,466		1,466
4.00" CRUSHED STONE BASE		251	251
11.50" AVERAGE ( FULL DEPTH ) CSB	847		847

COUNTY OF	ITEM NO.	SHEET NO.
SCOTT	7-1127.00	R2B

**NOTES**

ALL ASPHALT MIXTURES SHALL BE ESTIMATED AT 110 LBS. PER SQ. YD. PER INCH OF DEPTH, UNLESS NOTED OTHERWISE.

- ESTIMATED AT 115 LBS. PER SQ. YD. PER INCH OF DEPTH.
- ESTIMATED AT 100 LBS. PER SQ. YD. PER INCH OF DEPTH.
- ESTIMATED AT 95 LBS. PER SQ. YD. PER INCH OF DEPTH.
- APPROXIMATELY 1.94 ACRES
- SEED MIX TYPE I (FOR USE ON SLOPES 3:1 AND FLATTER) = 6,241 SQ YDS
- SEED MIX TYPE II (FOR USE ON SLOPES 3:1 AND STEEPER) = 136 SQ YDS

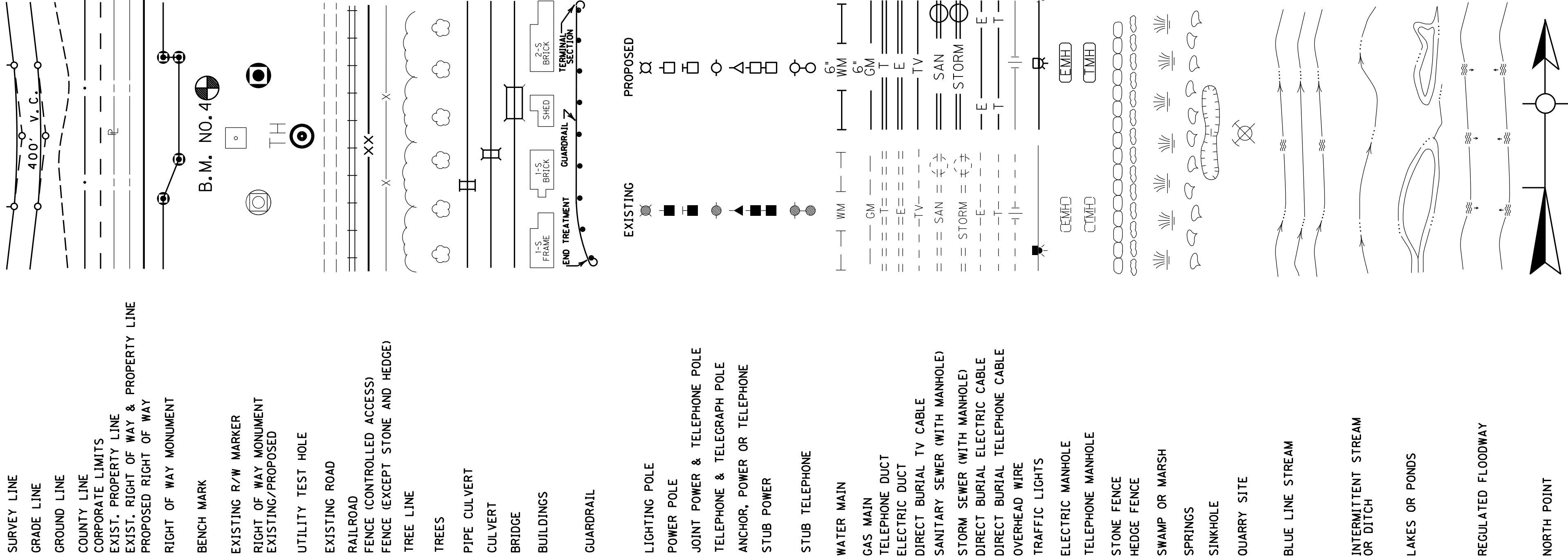
- FOR CONTROLLING DUST
- REMOVAL OF 64 LF SINGLE SPAN BRIDGE
- SIGNS FOR MAINTAINING TRAFFIC
- ESTIMATED AT 2/3 OF TOTAL SEEDING AND PROTECTION

- TOTAL PROJECT EARTHWORK  
EXCAVATION  
777 CU. YD. COMMON  
2,708 CU. YD. ROCK  
3,485 CU. YD. TOTAL EXCAVATION
- EMBANKMENT  
1,428 CU. YD. EMBANKMENT  
1,428 CU. YD. TOTAL EMBANKMENT BENCH
- EMBANKMENT  
417 CU. YD. EMBANKMENT BENCH  
687 CU. YD. TRANSVERSE BENCH  
1,104 CU. YD. TOTAL BENCH

NOTE:  
THE CONTRACTOR IS ADVISED THAT THE EARTHWORK CALCULATIONS SHOWN ARE FOR INFORMATION ONLY. ASSUMPTIONS FOR SHRINKAGE AND SWELL FACTORS ARE THE CONTRACTOR'S RESPONSIBILITY.



# CONVENTIONAL SIGNS

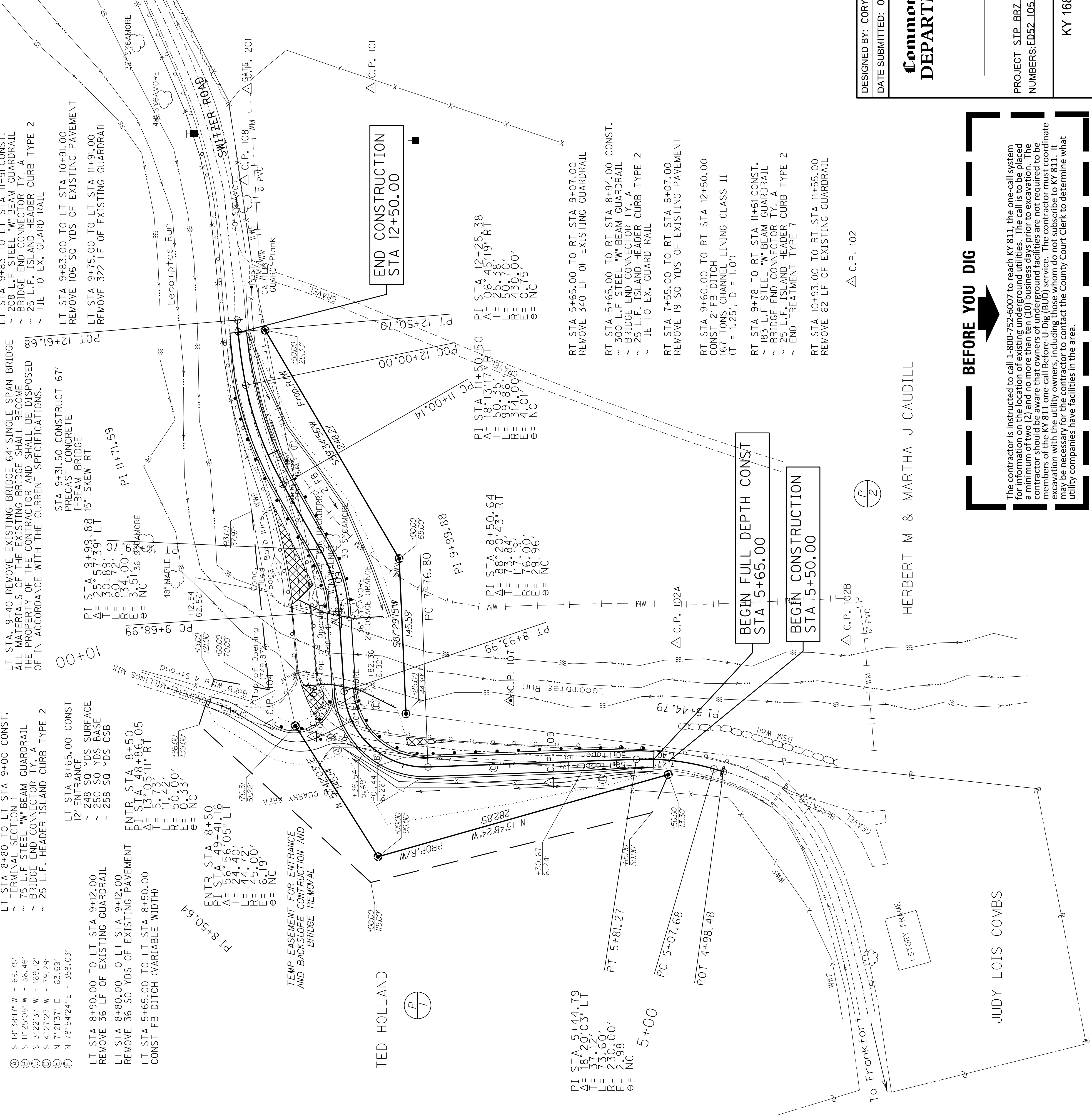
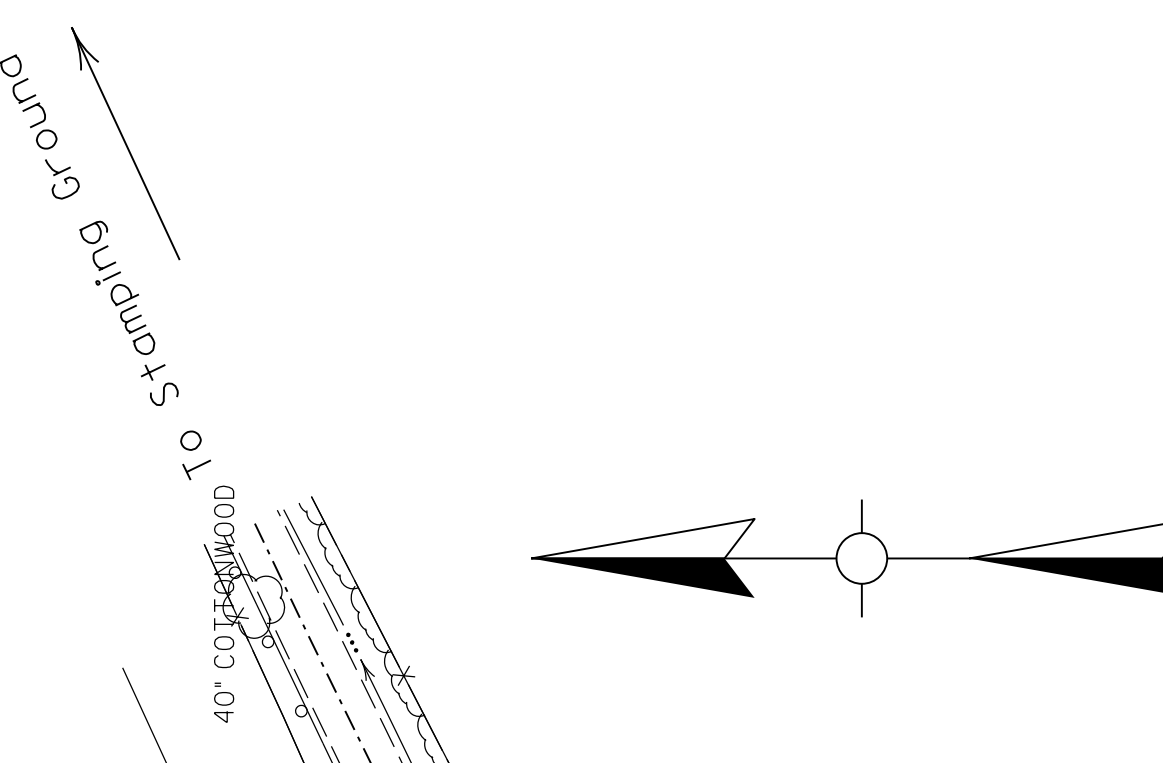


SURVEY LINE  
 GRADE LINE  
 GROUND LINE  
 COUNTY LINE  
 CORPORATE LIMITS  
 EXIST. PROPERTY LINE  
 EXIST. RIGHT OF WAY & PROPERTY LINE  
 PROPOSED RIGHT OF WAY  
 RIGHT OF WAY MONUMENT  
 BENCH MARK  
 EXISTING R/W MARKER  
 RIGHT OF WAY MONUMENT  
 EXISTING/PROPOSED  
 UTILITY TEST HOLE  
 EXISTING ROAD  
 RAILROAD  
 FENCE (CONTROLLED ACCESS)  
 FENCE (EXCEPT STONE AND HEDGE)  
 TREE LINE  
 TREES  
 PIPE CULVERT  
 CULVERT  
 BRIDGE  
 BUILDINGS  
 GUARDRAIL

EXISTING  
 LIGHTING POLE  
 POWER POLE  
 JOINT POWER & TELEPHONE POLE  
 TELEPHONE & TELEGRAPH POLE  
 ANCHOR, POWER OR TELEPHONE  
 STUB POWER  
 STUB TELEPHONE  
 WATER MAIN  
 GAS MAIN  
 TELEPHONE DUCT  
 ELECTRIC DUCT  
 DIRECT BURIAL TV CABLE  
 SANITARY SEWER (WITH MANHOLE)  
 STORM SEWER (WITH MANHOLE)  
 DIRECT BURIAL ELECTRIC CABLE  
 DIRECT BURIAL TELEPHONE CABLE  
 OVERHEAD WIRE  
 TRAFFIC LIGHTS  
 ELECTRIC MANHOLE  
 TELEPHONE MANHOLE  
 STONE FENCE  
 HEDGE FENCE  
 SWAMP OR MARSH  
 SPRINGS  
 SINKHOLE  
 QUARRY SITE

PROPOSED  
 LIGHTING POLE  
 POWER POLE  
 JOINT POWER & TELEPHONE POLE  
 TELEPHONE & TELEGRAPH POLE  
 ANCHOR, POWER OR TELEPHONE  
 STUB POWER  
 STUB TELEPHONE  
 WATER MAIN  
 GAS MAIN  
 TELEPHONE DUCT  
 ELECTRIC DUCT  
 DIRECT BURIAL TV CABLE  
 SANITARY SEWER (WITH MANHOLE)  
 STORM SEWER (WITH MANHOLE)  
 DIRECT BURIAL ELECTRIC CABLE  
 DIRECT BURIAL TELEPHONE CABLE  
 OVERHEAD WIRE  
 TRAFFIC LIGHTS  
 ELECTRIC MANHOLE  
 TELEPHONE MANHOLE  
 STONE FENCE  
 HEDGE FENCE  
 SWAMP OR MARSH  
 SPRINGS  
 SINKHOLE  
 QUARRY SITE  
 BLUE LINE STREAM  
 INTERMITTENT STREAM  
 OR DITCH  
 LAKES OR PONDS  
 REGULATED FLOODWAY  
 NORTH POINT

COUNTY OF	SCOTT
ITEM NO.	7-1127.00
SHEET NO.	R3



LT STA 8+80 TO LT STA 9+00 CONST.  
 ~ 12' ENTRANCE  
 ~ 248 SO YDS SURFACE  
 ~ 250 SO YDS BASE  
 ~ 258 SO YDS USB  
 ENTR STA 8+50  
 PI STA 48+86.05  
 Δ = 5.73  
 T = 11.42  
 L = 50.00'  
 E = NC

LT STA 8+90.00 TO LT STA 9+12.00  
 REMOVE 36 LF OF EXISTING GUARDRAIL  
 LT STA 8+80.00 TO LT STA 9+12.00  
 REMOVE 36 SO YDS OF EXISTING PAVEMENT  
 LT STA 5+65.00 TO LT STA 8+50.00  
 CONST FB DITCH (VARIABLE WIDTH)

LT STA 9+40 REMOVE EXISTING BRIDGE 64' SINGLE SPAN BRIDGE  
 ALL MATERIALS OF THE EXISTING BRIDGE SHALL BECOME  
 THE PROPERTY OF THE CONTRACTOR AND SHALL BE DISPOSED  
 OF IN ACCORDANCE WITH THE CURRENT SPECIFICATIONS.

LT STA 9+31.50 CONSTRUCT 67'  
 PRECAST CONCRETE  
 I-BEAM BRIDGE  
 15' SKEW RT  
 PI STA 9+99.88  
 Δ = 25.57  
 T = 30.89  
 L = 60.72'  
 E = NC

LT STA 9+83 TO LT STA 11+91 CONST.  
 ~ 208 L.F STEEL "W" BEAM GUARDRAIL  
 ~ BRIDGE END CONNECTOR TY. A  
 ~ 25 L.F. ISLAND HEADER CURB TYPE 2  
 ~ TIE TO EX. GUARD RAIL  
 LT STA 9+83.00 TO LT STA 10+91.00  
 REMOVE 106 SO YDS OF EXISTING PAVEMENT  
 LT STA 9+75.00 TO LT STA 11+91.00  
 REMOVE 322 LF OF EXISTING GUARDRAIL

END CONSTRUCTION  
 STA 12+50.00

PI STA 11+50.50  
 Δ = 18.31  
 T = 50.35  
 L = 99.86'  
 E = NC

PI STA 12+25.38  
 Δ = 26.45  
 T = 38.19  
 L = 50.70'  
 E = NC

PI STA 8+50.64  
 Δ = 99.20  
 T = 113.09  
 L = 76.00'  
 E = NC

PI STA 5+44.79  
 Δ = 18.20  
 T = 12.03  
 L = 71.60'  
 E = NC

PI STA 5+65.00 TO RT STA 9+07.00  
 REMOVE 340 LF OF EXISTING GUARDRAIL

RT STA 5+65.00 TO RT STA 8+94.00 CONST.  
 ~ 300 L.F STEEL "W" BEAM GUARDRAIL  
 ~ BRIDGE END CONNECTOR TY. A  
 ~ 25 L.F. ISLAND HEADER CURB TYPE 2  
 ~ TIE TO EX. GUARD RAIL

RT STA 7+55.00 TO RT STA 8+07.00  
 REMOVE 19 SO YDS OF EXISTING PAVEMENT

RT STA 9+60.00 TO RT STA 12+50.00  
 CONST 2' FB DITCH  
 167 TONS CHANNEL LINING CLASS II  
 (T = 1.25', D = 1.0')

RT STA 9+78 TO RT STA 11+61 CONST.  
 ~ 183 L.F STEEL "W" BEAM GUARDRAIL  
 ~ BRIDGE END CONNECTOR TY. A  
 ~ 25 L.F. ISLAND HEADER CURB TYPE 2  
 ~ END TREATMENT TYPE 7

RT STA 10+93.00 TO RT STA 11+55.00  
 REMOVE 62 LF OF EXISTING GUARDRAIL

HERBERT M & MARTHA J CAUDILL

JUDY LOIS COMBS

SCALE: 1"=50

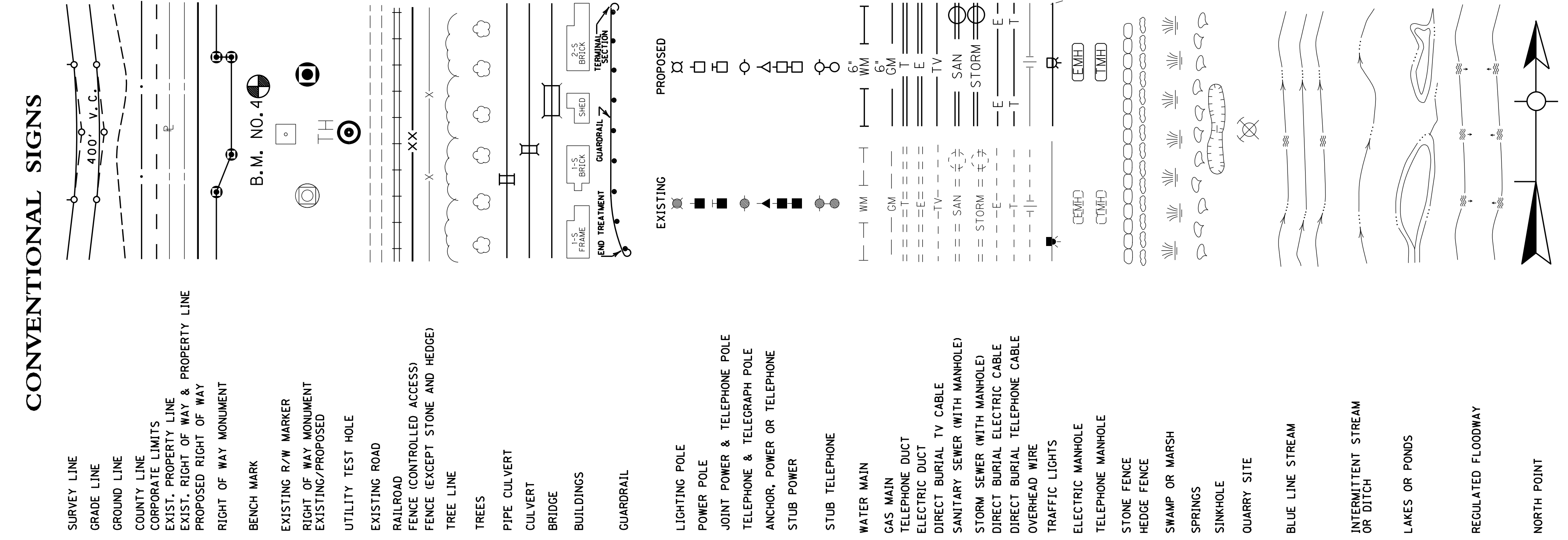
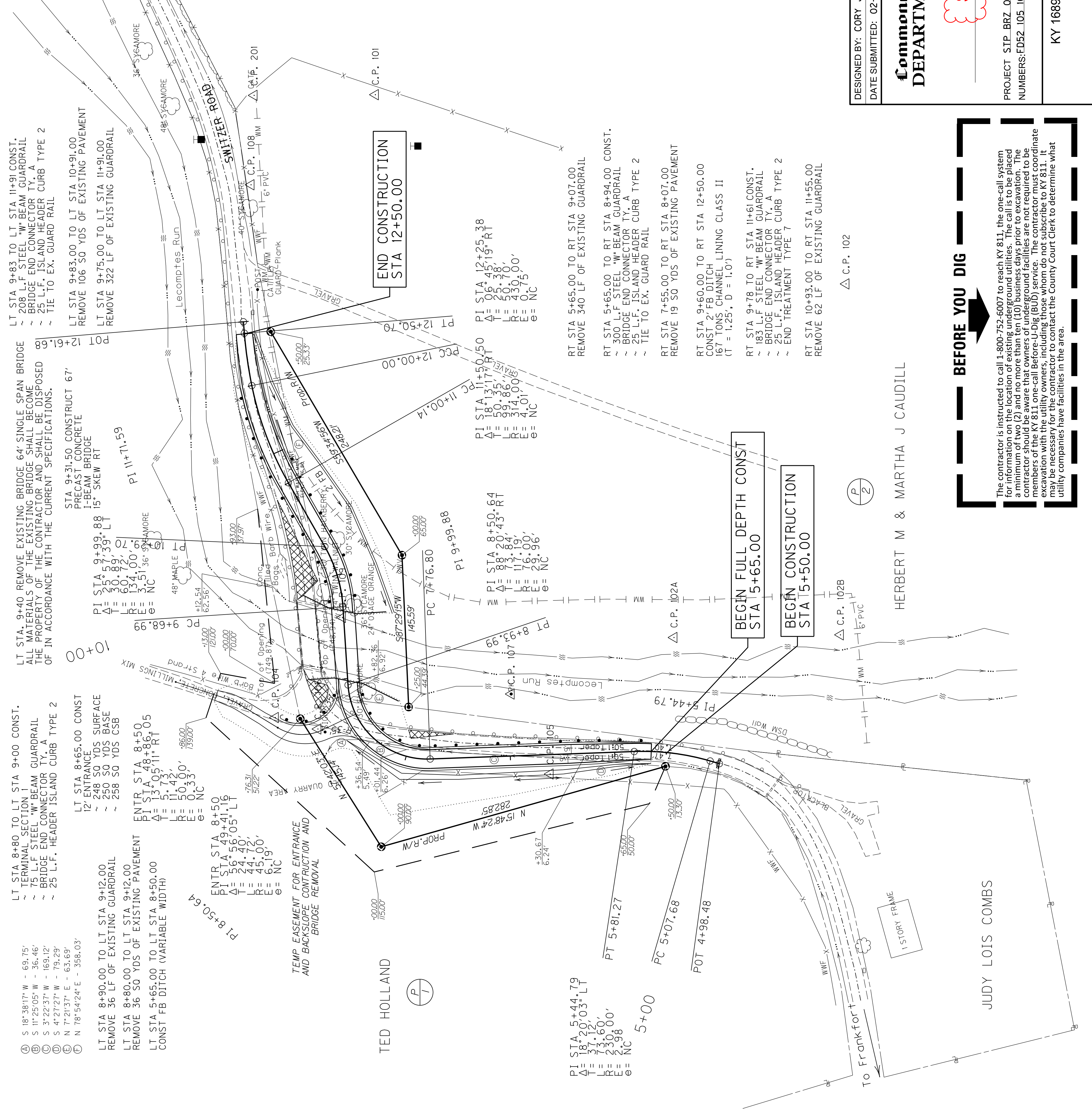
DESIGNED BY: CORY JONES  
 DATE SUBMITTED: 02-01-2018

**BEFORE YOU DIG**

The contractor is instructed to call 1-800-752-6007 to reach KY 811, the one-call system for information on the location of existing underground utilities. The call is to be placed a minimum of two (2) and no more than ten (10) business days prior to excavation. The contractor must call 811 for all excavations, regardless of the depth. The contractor must coordinate excavation with the utility owners, including those whom do not subscribe to KY 811. It may be necessary for the contractor to contact the County Court Clerk to determine what utility companies have facilities in the area.

REVISED 4-25-18

To Stamping Ground



DESIGNED BY: CORY JONES  
DATE SUBMITTED: 02-01-2018

**Commonwealth of Kentucky**  
**DEPARTMENT OF HIGHWAYS**  
COUNTY OF  
**SCOTT**

PROJECT SJP\_BRZ\_0703(3)3  
NUMBERS:ED52\_105\_1689\_001-002

KY 1689 OVER LECOMPTIES RUN  
PLAN SHEET

SCALE: 1"=50'

**BEFORE YOU DIG**

The contractor is instructed to call 1-800-752-6007 to reach KY 811, the one-call system for information on the location of existing underground utilities. The call is to be placed a minimum of two (2) and no more than ten (10) business days prior to excavation. The excavator must contact the utility owners (KUIC) for the project location. The contractor must coordinate excavation with the utility owners, including those whom do not subscribe to KY 811. It may be necessary for the contractor to contact the County Court Clerk to determine what utility companies have facilities in the area.